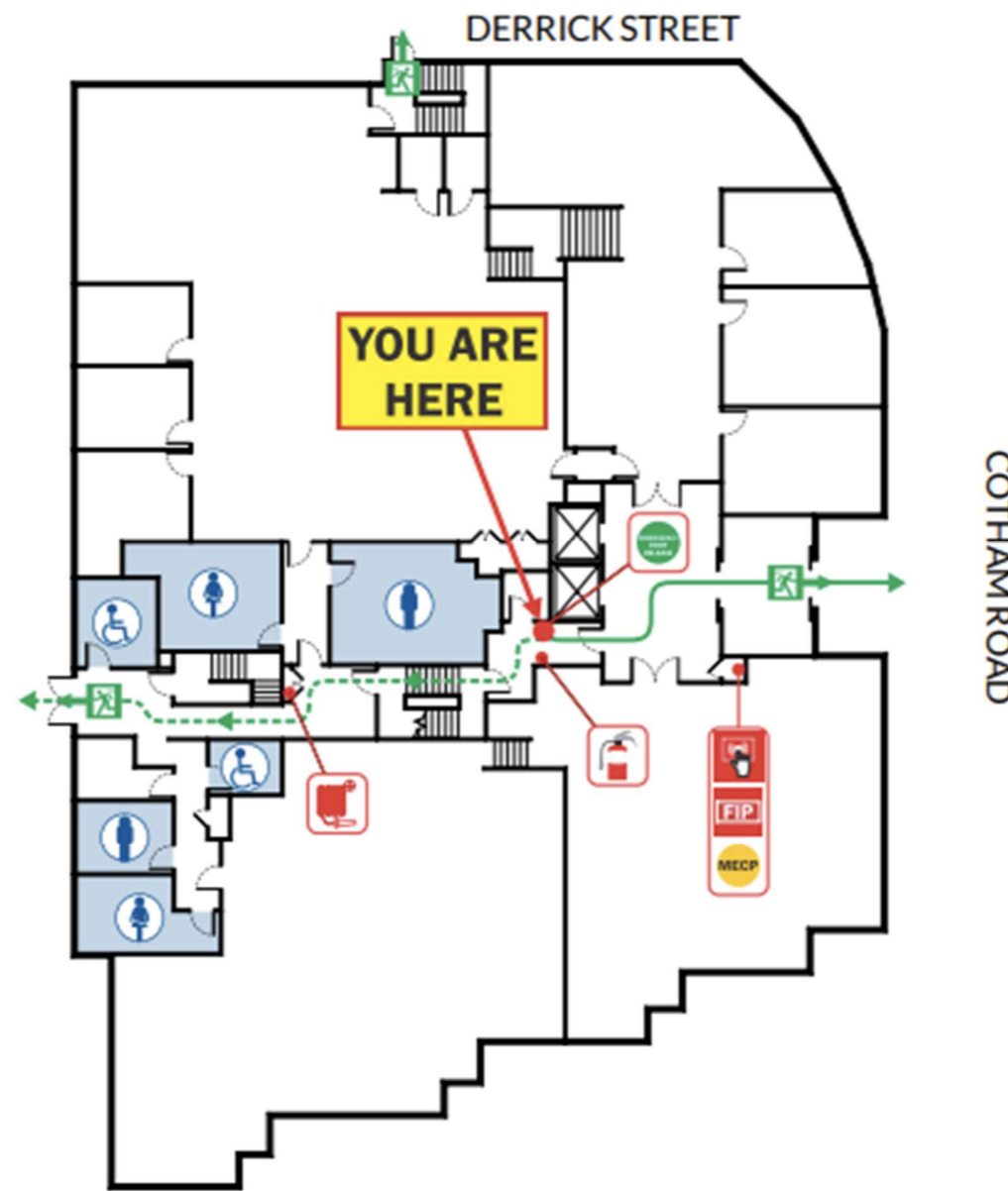


# EVACUATION DIAGRAM

Issue Date:  
17 December 2024  
(Valid for a period of 5 years)

## GROUND FLOOR 35 COTHAM ROAD, KEW, VIC 3101



### 🔒 STAY (LOCKDOWN)

- Gather people together out of sight
- Close and lock windows & doors
- Close blinds & turn off lights
- Switch mobile phones to silent
- Switch off mobile phone vibrate function
- KEEP CALM & REMAIN QUIET
- Barricade door with furniture if necessary
- Await instructions of lockdown completion
- In a life threatening emergency call 000

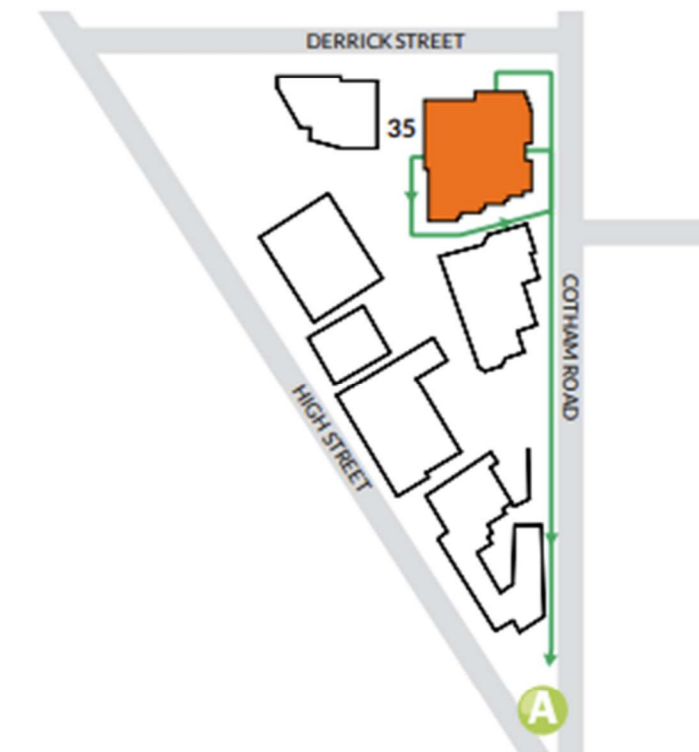
**000 EMERGENCY**

### 🚶 GO (EVACUATION)

- Commence evacuation when directed
- Switch off plant & equipment
- Assist mobility impaired persons
- DO NOT RUN
- Go to designated assembly area
- DO NOT re-enter building until instructed
- In a life threatening emergency call 000

**000 EMERGENCY**

## ASSEMBLY AREA



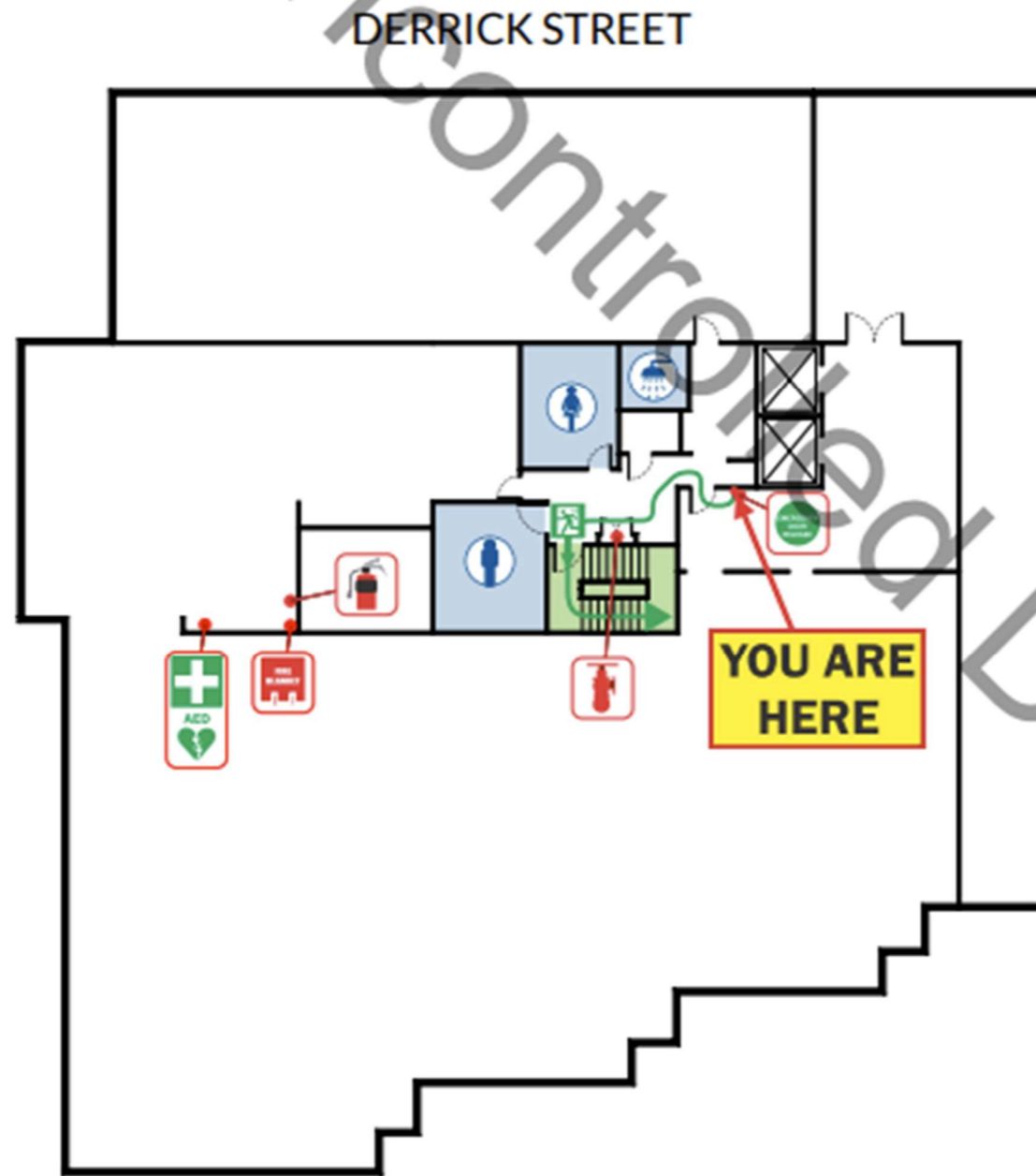
Accessible Amenities	Female Amenities	Male Amenities	Dry Chemical Powder Extinguisher	Fire Hose Reel	Manual Call Point	Fire Indicator Panel	Emergency Door Release	Master Emergency Control Point	Emergency Exit	Alternate Evacuation Path	Evacuation Path	Assembly Area
----------------------	------------------	----------------	----------------------------------	----------------	-------------------	----------------------	------------------------	--------------------------------	----------------	---------------------------	-----------------	---------------



# EVACUATION DIAGRAM

Issue Date:  
25 May 2022  
(Valid for a period of 5 years)

**LEVEL 4**  
35 COTHAM ROAD, KEW, VIC 3101



**STAY (LOCKDOWN)**

- Gather people together out of sight
- Close and lock windows & doors
- Close blinds & turn off lights
- Switch mobile phones to silent
- Switch off mobile phone vibrate function
- KEEP CALM & REMAIN QUIET
- Barricade door with furniture if necessary
- Await instructions of lockdown completion
- In a life threatening emergency call 000

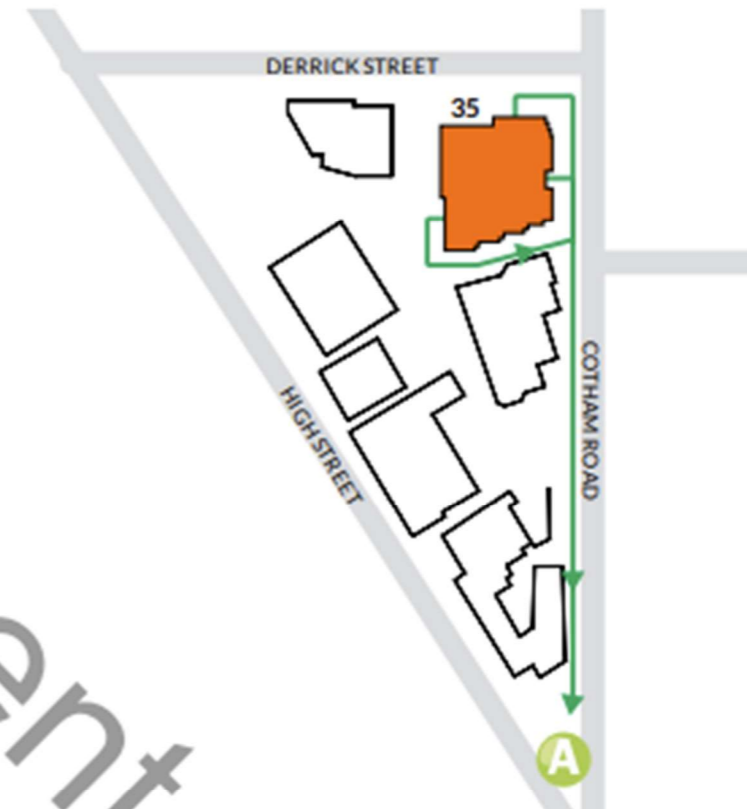
**000 EMERGENCY**

**GO (EVACUATION)**

- Commence evacuation when directed
- Switch off plant & equipment
- Assist mobility impaired persons
- DO NOT RUN
- Go to designated assembly area
- DO NOT re-enter building until instructed
- In a life threatening emergency call 000

**000 EMERGENCY**

## ASSEMBLY AREA



Legend for safety equipment and symbols:

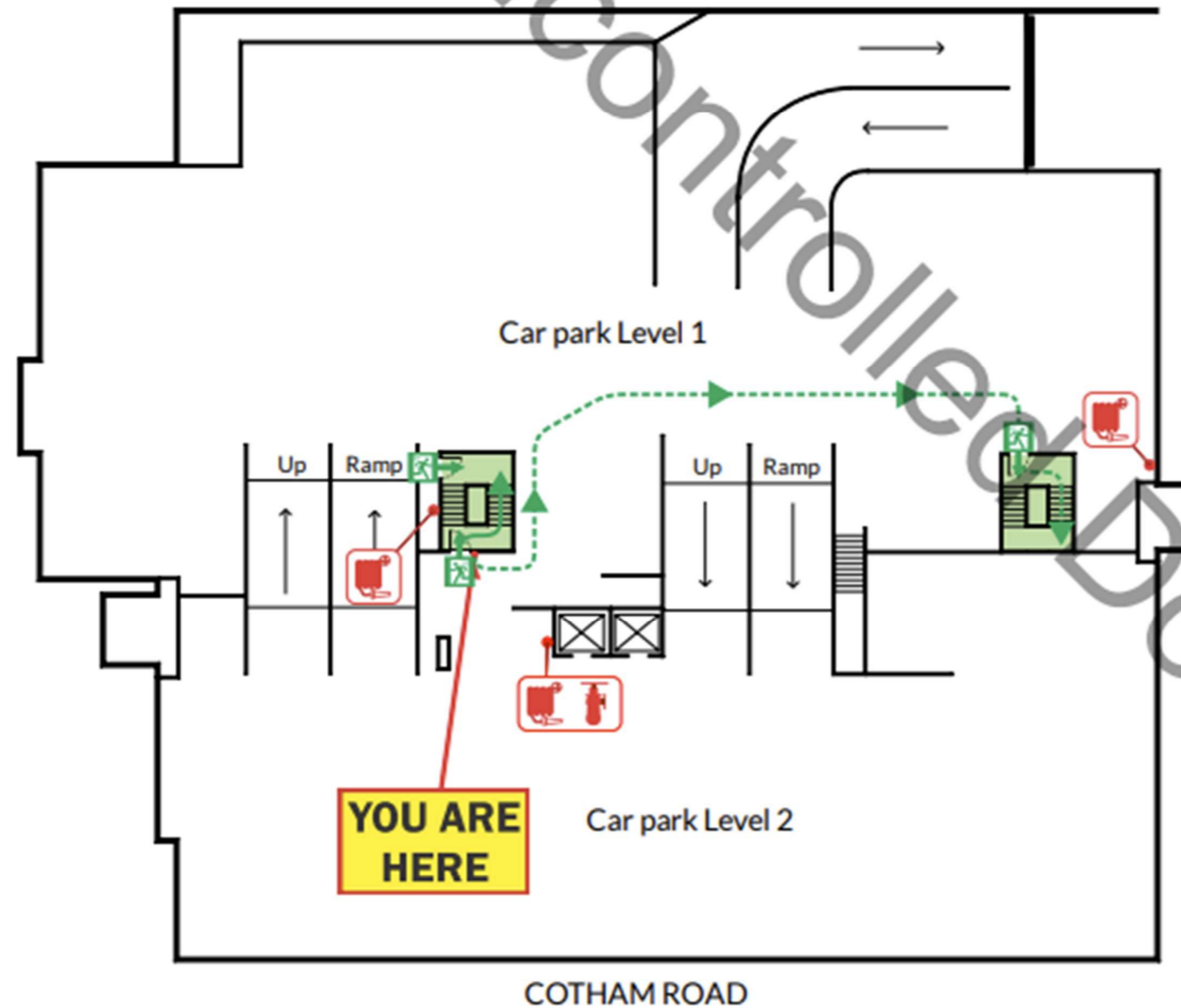
- Amenities Female
- Amenities Male
- Shower
- First Aid Kit
- Defibrillator
- Emergency Door Release
- Carbon Dioxide Extinguisher
- Hydrant
- Fire Blanket
- Emergency Exit
- Evacuation Path
- Assembly Area



# EVACUATION DIAGRAM

Issue Date:  
25 May 2022  
(Valid for a period of 5 years)

## LOWER BASEMENT 1 AND 2 35 COTHAM ROAD, KEW, VIC 3101



**STAY (LOCKDOWN)**

- Gather people together out of sight
- Close and lock windows & doors
- Close blinds & turn off lights
- Switch mobile phones to silent
- Switch off mobile phone vibrate function
- KEEP CALM & REMAIN QUIET
- Barricade door with furniture if necessary
- Await instructions of lockdown completion
- In a life threatening emergency call 000

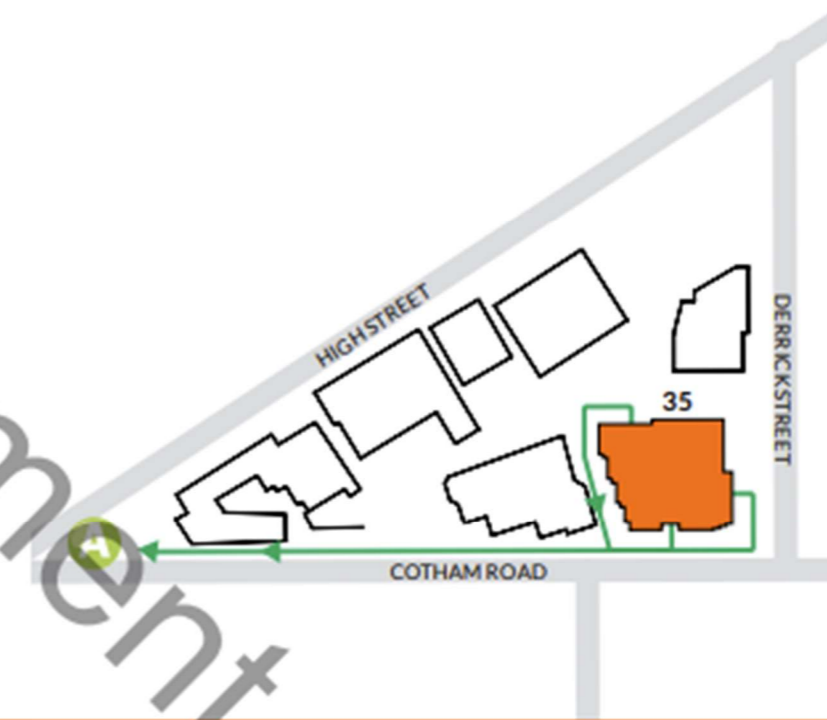
**000 EMERGENCY**

**GO (EVACUATION)**

- Commence evacuation when directed
- Switch off plant & equipment
- Assist mobility impaired persons
- DO NOT RUN
- Go to designated assembly area
- DO NOT re-enter building until instructed
- In a life threatening emergency call 000

**000 EMERGENCY**

### ASSEMBLY AREA



Fire Hose Reel



Hydrant



Emergency Exit



Evacuation Path



Alternate Evacuation Path



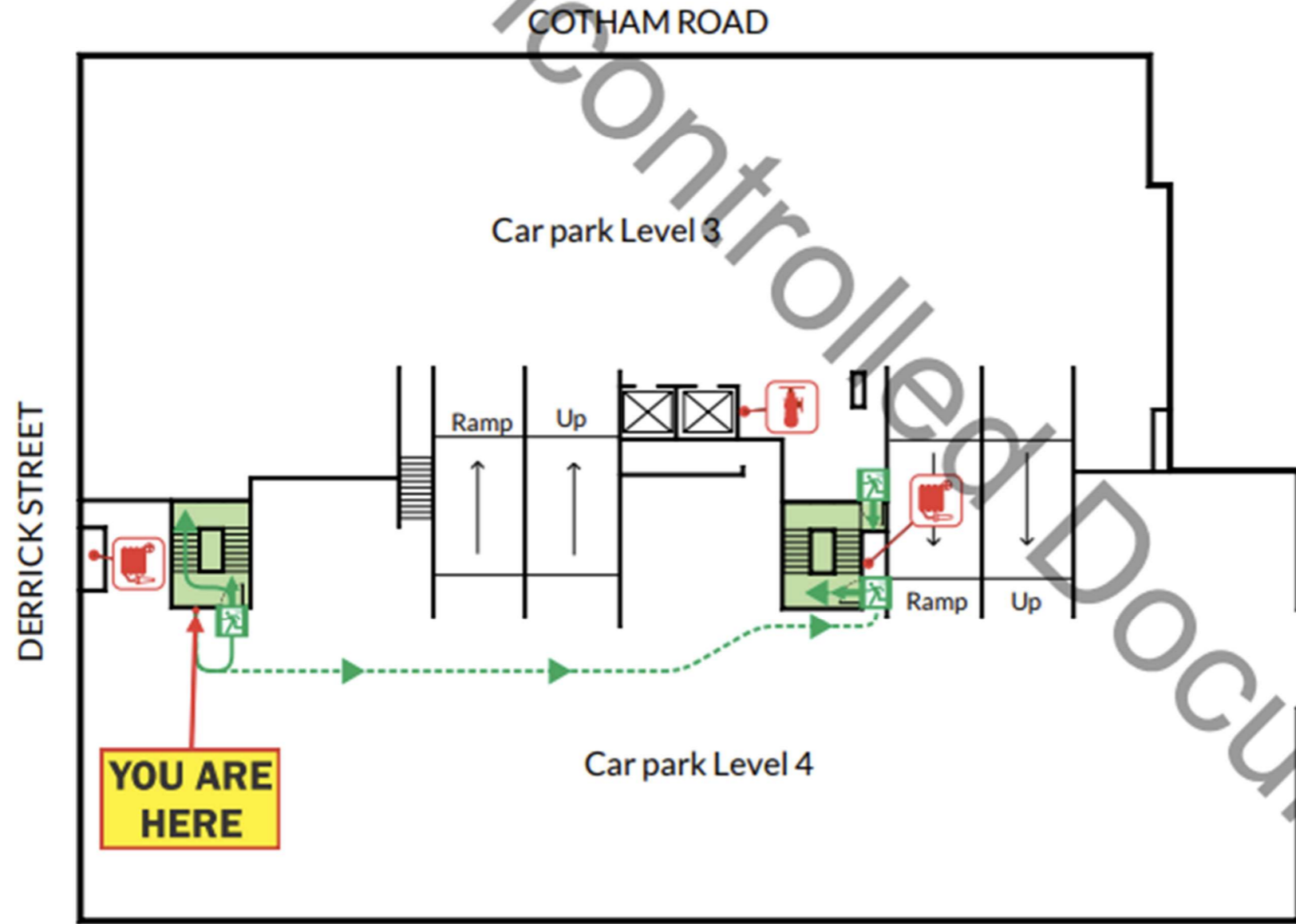
Assembly Area



# EVACUATION DIAGRAM

Issue Date:  
25 May 2022  
(Valid for a period of 5 years)

## LOWER BASEMENT 3 AND 4 35 COTHAM ROAD, KEW, VIC 3101



**🔒 STAY (LOCKDOWN)**

- Gather people together out of sight
- Close and lock windows & doors
- Close blinds & turn off lights
- Switch mobile phones to silent
- Switch off mobile phone vibrate function
- KEEP CALM & REMAIN QUIET
- Barricade door with furniture if necessary
- Await instructions of lockdown completion
- In a life threatening emergency call 000

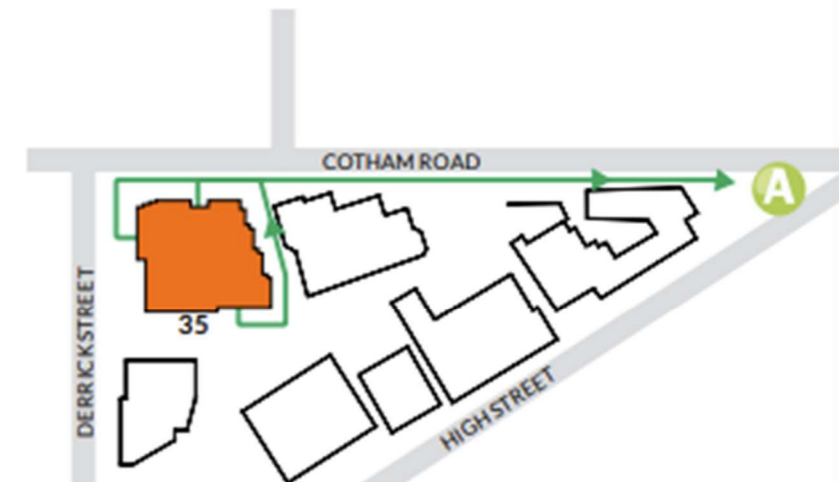
**000 EMERGENCY**

**🚶 GO (EVACUATION)**

- Commence evacuation when directed
- Switch off plant & equipment
- Assist mobility impaired persons
- DO NOT RUN
- Go to designated assembly area
- DO NOT re-enter building until instructed
- In a life threatening emergency call 000

**000 EMERGENCY**

### ASSEMBLY AREA



# EVACUATION DIAGRAM

Issue Date:  
25 May 2022  
(Valid for a period of 5 years)

**LOWER BASEMENT 5**  
35 COTHAM ROAD, KEW, VIC 3101

**🔒 STAY (LOCKDOWN)**

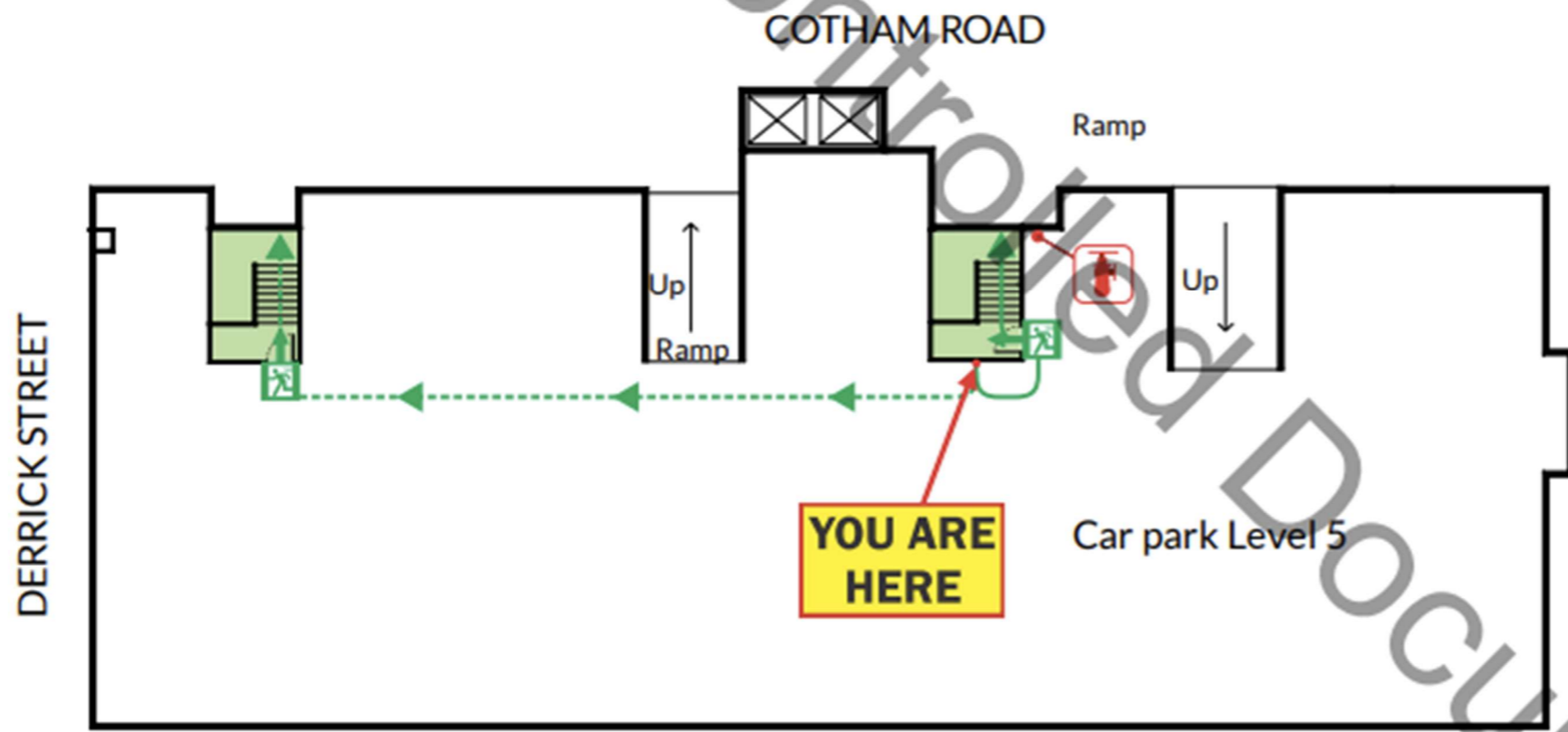
- Gather people together out of sight
- Close and lock windows & doors
- Close blinds & turn off lights
- Switch mobile phones to silent
- Switch off mobile phone vibrate function
- KEEP CALM & REMAIN QUIET
- Barricade door with furniture if necessary
- Await instructions of lockdown completion
- In a life threatening emergency call 000

**000 EMERGENCY**

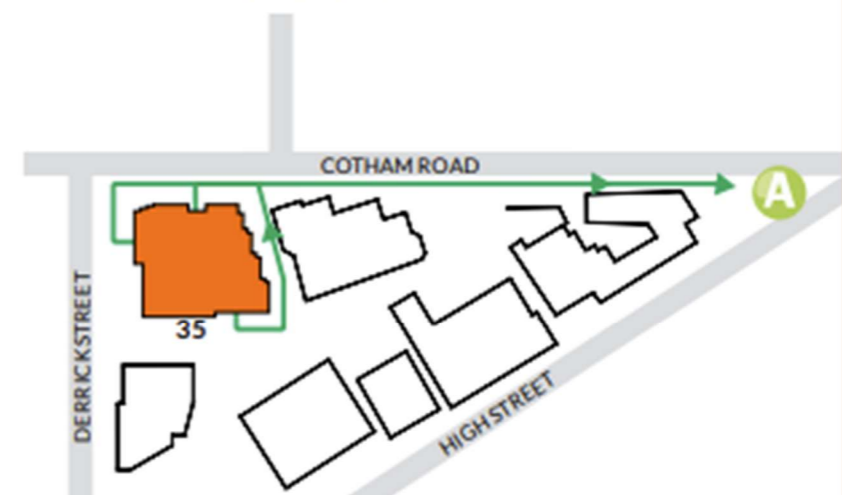
**🚶 GO (EVACUATION)**

- Commence evacuation when directed
- Switch off plant & equipment
- Assist mobility impaired persons
- DO NOT RUN
- Go to designated assembly area
- DO NOT re-enter building until instructed
- In a life threatening emergency call 000

**000 EMERGENCY**



## ASSEMBLY AREA



Hydrant



Emergency Exit



Evacuation Path



Alternate Evacuation Path



Assembly Area

